

# ALTRUSA TIDINGS



ALTRUSA INTERNATIONAL INC. OF RICHARDSON, TEXAS

MARCH 2011

LEADERS IN SERVICE—EMPOWER ALTRUSA

VOLUME 42, ISSUE 10

## 2010-2011 Board of Directors

### President

Mary Beth McLemore

### President-Elect

Bonnie Perry

### Vice-President

Cindy McIntyre

### Recording Secretary

Barbara Cornelius

### Corresponding Secretary

Kimberly Kierce

### Administrative Treasurer

Elizabeth Smith

### Foundation Treasurer

Dena Davis

### Directors

Susan Frensley

Jill Van Os

Nancy Rohm

Pam Kovacs

### Immediate Past President

Deb Bourland

## In Every Issue

President's Message .....	1
Project Previews .....	9
Project Reports .....	10-11
Committee Reports .....	3-9
Board Actions .....	12
Meeting Previews .....	15
Meeting Reports .....	15
Club Calendar .....	19
District Nine News .....	10
International News .....	16
Int'l Foundation News .....	16
Altrusa Accent .....	14
Member Highlights .....	13
Minutes of Meetings .....	17-18

## Special Reports

Going to Conference? .....	2
Altrusa Market Place .....	2
Slate of Officers .....	3
Orientation .....	9, 19
Int'l Women's Day .....	9, 12
Conference Delegates .....	12
Appletree Auction .....	12
News from Other Clubs .....	13
ACE Award Criteria .....	14

## Just for the Fun of It

Book Club .....	3, 19
Treasure Swap .....	4
Lunch Bunch .....	10
Birthdays .....	19
Meet & Greet .....	19
Bridge .....	19

## PRESIDENT'S MESSAGE

### MARY BETH'S MUSINGS

#### PROGRESS TOWARD OUR GOALS—THERE IS MORE TO BE DONE!

Last May, I set three goals for our club. (See page 4 in your Yearbook.) After a year of listening, learning, and watching as President-Elect, I set these goals wanting to make a strong Altrusa Club stronger. International shows our Club has 79 active members with three more since January. We are the largest club in District Nine. Our Club is sound financially, thanks to our marvelous OWT luncheon. Our Club has fun and supports each member, when needed. We do many wonderful projects in Richardson. I am told that the city's movers and shakers know Altrusa, so I didn't want to fix what wasn't broken, only it make better.

My first goal was to "Strengthen Altrusa Leadership". Mary O and Samanthia, Leaders of the Leadership Committee, and their members provided an outstanding speaker for the January dinner meeting, gave **Tidings** leadership information and quotes, and will be giving an outstanding Saturday Leadership Workshop on March 5. (Have you signed up for this and have you invited another leader in the community or District Nine to join you?) The Nominating Committee, Kay G., Mary O., and Sandy Martin, didn't have too hard a time finding a slate for the 2011-2012 Board. I know



Bonnie is hard at work finding her Leaders, and many of you have said yes to her. Thank you! A lot of you have said you are going to Conference and some have even mentioned Convention this summer. Committee Leaders reported that different members have taken projects to organize. Thus, my first goal is one that I can report in my final President's Report has been accomplished.

My second goal was to "Work with Other Altrusa Clubs". We have invited other clubs to dinner meetings and the Leadership Workshop on March 4. We have listed other clubs' events on our agenda and in the **Tidings**. Various members have attended other clubs' craft fairs and teas. But, have we really worked together? I still would like for our strong Club to plan a service project that involved other clubs. The closest we have come is last September with "Reading for Ten Minutes" in support of a New Zealand Club project. We included District Nine clubs and received a very positive response, with over 1,000 Texans reading with New Zealand. Thank you, Barbara O, for doing this. Service Committees, can one of you help our Club end on a high with a joint club project? Please do some brainstorming.

My final goal was to "Interweave Our Projects, thus Growing Membership Interest and Getting More Publicity." At the Mid-Year Review at my new home on January 27, everyone was excited, impressed, and even Leaders of

(CONTINUED ON PAGE 2)

## Election of Officers for 2011-2012

at March 3 Meeting.

**VOTE!**

See revised slate on page 3.

The Altrusa leaders who work most effectively never say "I." They say "we"; they think "team." They understand their job to be to make the team function. They accept responsibility and don't sidestep it, but "we" gets the credit. This is what creates trust, what enables Altrusans to get the task done. (*adapted from a quote by Peter Drucker*)

(CONTINUED FROM PAGE 1)

Committees who reported seemed astonished by all our Club has done and is planning for the year. The **Tidings** covers the wonderful projects, work, volunteering, and fun we have. I want more! We have had very few articles in other papers, Richardson to Go, Living, or the Morning News Richardson section. I see very little mention of Richardson in our District or International publications. Why? Someone in each committee needs to let the world know what Altrusa of Richardson is doing. It's not too late. I also question whether people in our club really do know all that we do. Do each of you share with other members your excitement about projects you work on? A good two-minute accent would be sharing an Altrusa moment. In my May speech, I suggested Valentine's Day to interweave the committees. How about Spring Cheer Up Day to interweave? In the Morning News, I read about a knitting project that Senior Homes did. Could our Seniors do this for Ability House or Terrace? Could Terrace make Grandparent's Day cards for a Senior Home or Birthday

cards for Ability House residents? We would provide the materials, directions, and organization, and children, Ability House residents, or seniors feel needed. Committees then see more of what others are doing. These are only suggestions to get the committees thinking. There are 82 great Altrusa minds. Lets begin to plan for next year. but let's finish this Club year with a BANG!

*Mary Beth McLemore,*  
President

### GOING TO CONFERENCE?

- ❑ Dena Davis will accept your check and registration form at the March 3 meeting and mail them for you.
- ❑ Jenn Rohm is collecting ideas for our attire for the Friday night "Dancing with the Stars" party. (And don't forget, the Cat Daddies will entertain!)
- ❑ Dena and Jenn are making lists of who is riding or rooming with whom., so let them know your plans!
- ❑ Mary Beth's goal is for 30 members to attend Conference, with five being First-Timers. Governor-Elect LaVone Arthur challenged us to have 50!

congratulations!



The Richardson City Council congratulates the outstanding women recognized today, and thanks Altrusa for its 43 years of continued service in our community.

Council Members pictured from left to right: Mark Solomon, Bob Macy, Steve Mitchell, Amir Omar, Mayor Gary Slagel, John Murphy and Mayor Pro Tem Bob Townsend.



### Altrusa Market Place & Bake Sale

Saturday, May 7, 2011  
10 am-5pm  
Friends Place • 1960 Nantucket Drive  
Richardson Texas 75080

- ✓ Home-Made Baked Goods – Yum!
- ✓ Candy – Yum Yum!
- ✓ Hand made crafts – 1 of a kind
- ✓ Jewelry – Unique "bling"
- ✓ Soft goods – 1 of a kind
- ✓ Gifts from around-the-world

Benefiting Altrusa International of Richardson  
Admission: FREE! • FREE! • FREE! • FREE! • FREE!



## NOMINATING COMMITTEE REPORT

**REVISED SLATE OF OFFICERS FOR 2011-2012 ANNOUNCED***By Kay George*

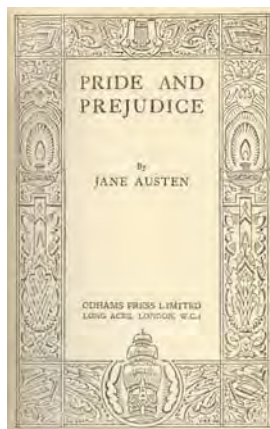
There has been a change in the slate of officers for 2011-2012. One of our Director nominees, Ann Payne, is unable to accept the nomination at this time. Gloria Sandoval has graciously agreed to replace her on the slate. The nominees are as follows:

President-Elect	Kim Kierce
Vice President	Janet Vance
Foundation Treasurer	Liz Luthans
Administrative Treasurer	Dena Davis
Recording Secretary	Toni Garrett
Corresponding Secretary	Sue McElveen
New Directors:	Gloria Sandoval
	Genevieve Hamulak

Bonnie Perry will be our President, and Pam Kovacs and Nancy Rohm will return for their second year as Directors.

The election will be conducted at the March Business Meeting on March 3<sup>rd</sup>. Members in good standing (dues and fees paid) may vote absentee. Absentee votes must be provided to Kay George, Chair of the Nominating Committee, **no later than Wednesday, March 2<sup>nd</sup>**. You may notify her via email at the address in the yearbook. **Absentee ballots received the day of the election will not be counted.** It is the responsibility of each member responding via email to verify that the Chair received the member's vote by return email. No member will be a candidate for more than one office.

## MEMBERSHIP RETENTION COMMITTEE REPORT

**ANOTHER GREAT BOOK CLUB MEETING; CLASSIC IS NEXT***By Kay George*

At our February meeting, Gerry Carron led us in a discussion of **The Reader** by Bernard Schlink. There were different reactions to the book and the views expressed by attendees made for an exciting exchange of ideas. This is a brilliant philosophical love story, which retains its intense suspense until the very last pages. This mesmerizing novel is a story of love and secrets, horror and compassion, unfolding against the haunted landscape of postwar Germany.

When he falls ill on his way home from school, fifteen-year-old Michael Berg is rescued by Hanna, a woman twice his age. In time, she becomes his lover--then she inexplicably disappears. When Michael next sees her, he is a young law student, and she is on trial for a hideous crime. As he watches her refuse to defend her innocence, Michael gradually realizes that Hanna may be guarding a secret she considers more shameful than murder.

The book is written in a compelling manner and the reader is not only drawn deeply into the love affair between the two primary characters, Michael and Hanna, but into the general philosophical discussion of love and particularly this love affair. We are also exposed to the whole line of arguments concerning German guilt in the 1950s and 60s.

Thanks to Pam Kovacs for providing an awesome array of snacks as well as the paper goods, Mary Osentowski for the "libations," and Debbie Simms for soft drinks and water.

We hope you will join us on Monday, March 28, at 6:00

PM. Bonnie Perry will lead a discussion of the classic, **Pride & Prejudice**, by Jane Austen. First published in 1813, the story follows the main character, Elizabeth Bennet, as she deals with issues of manners, upbringing, morality, education and marriage in the society of the landed gentry early 19th-century England. Elizabeth is the second of five daughters of a country gentleman, living near the fictional town of Meryton in Hertfordshire, near London.

The plot of the novel is driven by a particular situation of the Bennet family in which Mr. Bennet's family could be left without a home or income in the event of his death. Mrs. Bennet worries about this predicament, and wishes to find husbands for her five daughters quickly.

Though the story is set at the turn of the 19th century, it retains a fascination for modern readers, continuing near the top of lists of 'most loved books'. It has become one of the most popular novels in English literature, and receives considerable attention from literary scholars. Modern interest in the book has resulted in a number of dramatic adaptations and an abundance of novels and stories imitating Austen's memorable characters or themes. To date, the book has sold some 20 million copies.

As always, we meet at Friends Place Adult Day Services, 1960 Nantucket Drive in Richardson. Refreshments will be served.

**Altrusa International, Inc.  
of Richardson, Texas**

P.O. Box 832101  
Richardson, TX 75083

Carolyn Swanson, Newsletter Editor  
[contact@altrusarichardson.com](mailto:contact@altrusarichardson.com)

[www.altrusarichardson.com](http://www.altrusarichardson.com)



## MEMBERSHIP RETENTION COMMITTEE REPORT

## TREASURE SWAP

By Pam Kovacs

How could anyone not have had a good time? When 16 Altrusa sisters gather together for a mostly home-made brunch complete with mimosas to exchange beautifully wrapped mystery gifts, it is going to be a fun morning with loads of laughter.

This year's annual Altrusa Treasure Swap was coordinated by Genevieve Hamulak and Janie Jaquier and held at Friends Place on Saturday, February 12<sup>th</sup>. What a wonderful job these ladies did in hosting a great, successful event.

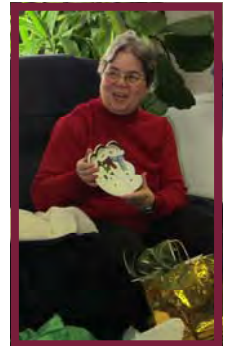
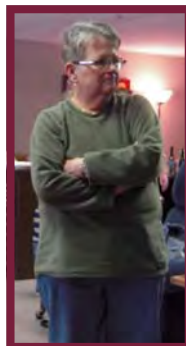
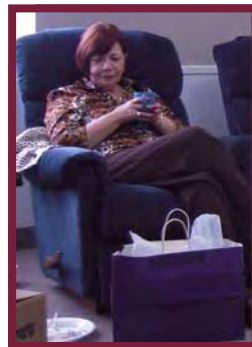
That Saturday there was probably enough food on hand to feed the entire club, but we did our best to wipe out a significant portion of the goodies. Coffee and hot teas were also available for those not wanting to partake in the gaiety of enjoying Saturday morning mimosas.

An excessive number of really nice and desirable gifts minimized some of the desire to steal another member's gift. Many went for a wrapped gift over a "steal" and were pleased with selection. But there was plenty of swapping to keep everyone one on their toes and tempt some to make their treasures less visible in hopes their gift in hand might not be noticed and then taken. There was also an interesting assortment of more unique treasures, but as they say, "one man's trash is another man's treasure" so they just added a nice touch to the spirit of the game.



Kay George managed to rescue the "demented" clowns - her personal term of endearment for them - from extinction. This ensured that they would have a special place at future treasure swaps and continue to be the gift that keeps returning.

An amazing array of gifts to swap included such items as an ornate Asian design cake plate, decorative glass bowl, crystal chess set, cook-books, and coffee press. Without question, we all enjoyed a lovely, leisurely morning and had a good time acquiring our new treasure. Who knows—some of these might even be back next year!



## EDUCATION COMMITTEE REPORT

**NEW WEDNESDAY CLUB COULD USE SOME HELP!***By Andrea Rutledge*

Beginning on Wednesday, March 2, Altrusans Pat Hansen and Andrea Rutledge will initiate the Wednesday Club for kindergarteners at Terrace. The Club, eight students selected by their teachers for their achievement and eagerness to learn, will meet weekly from 12:30-1:30 for enrichment activities.

Our tentative schedule will be:

- Book review (what book do you think your friends would like)
- Story telling
- Project
- Poem

- Distribution of the password (vocabulary word from poem)

Pat and Andrea would love to have additional help. There are more qualified children than they are able to take into the club, and they also need help with projects and project ideas. Contact Andrea if you want to participate.



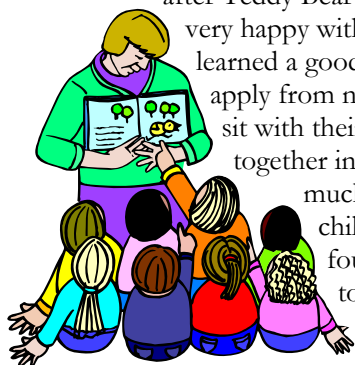
## EDUCATION COMMITTEE REPORT

**“READ TO ME” PROGRAM FOR KINDERGARTENERS BEGINS***By Andrea Rutledge*

Though challenged by the weather, kindergarteners, their parents, teachers, and Altrusans have carried through with our experimental Read-To-Me program, modeled

after Teddy Bear Time, and we have been

very happy with the results. We have learned a good lesson that we hope to apply from now on: when the children sit with their parent instead of sitting together in a circle, the parent is much more involved, and the child is very happy. We have found this group of parents to be engaged with their children from the begin-



ning of the reading when we handed out the book through the crafts, and we have noticed fewer siblings are attending the program.

The teachers have been volunteering their time, taking turns being in attendance. The children and parents seem to enjoy the program, appreciate the books, and love the crafts. Pat Hansen and Elizabeth Smith have created wonderful new crafts to match the books we purchased at the Scholastic sale last summer.

Actually, the only real problem we have had with the program has been the weather.

By the time we have completed Read-To-Me, the children will have six new books and probably eight or so used books to add to their home libraries.

## EDUCATION COMMITTEE REPORT

**FIELD TRIP CHAPERONES NEEDED***By Andrea Rutledge*

On May 5, the kindergarteners at Terrace will be going to the Museum of Nature and Natural History (the Science Place to us old folks) in Fair Park. This is an Altrusa-sponsored field trip. We will leave school at 9:00 the children and chaperones have classes at 10:00 AM, and we will return to school about 1:45 PM. If you can chaperone this trip, please contact Andrea Rutledge. Each kindergarten class will have a different museum class (no dinosaurs this year), so you can have your choice. There are three kinder-



MUSEUM OF  
**NATURE &  
SCIENCE**  
DALLAS, TEXAS

garten classes. This will be a good opportunity to see some of our friends from last year who are now turning six year old!



## EDUCATION COMMITTEE REPORT

**HAVE YOU EVER WATCHED A LION DANCE?***By Andrea Rutledge*

“It was the best assembly Terrace ever had.”

“The children were talking about it all day.”

“It was awesome!”

These are just a few of the comments heard from teachers after the Chinese New Year’s Celebration and Lion dance presented at Terrace by the Sun Ray Chinese School of Carrollton and the Dragon dancers. The assembly, arranged by Helene Lee, was

planned and sponsored by our Altrusa club.



Children from Pre-K through Second Grade heard about the two-week Chinese New Year’s Celebration, then saw the Lion dance. Some of the children fed the lion red envelopes of money to bring good luck. Then, for the experience of a life-time, children were chosen to become the lion and perform the lion dance as other children beat the drum and crashed the cymbals. Finally, the teachers danced and played. Each student received a red envelope with a Chinese candy and good luck message and a shiny penny for good luck and prosperity in the Year of the Rabbit.

The pictures tell what words cannot. The program delighted everyone in attendance, especially the youngsters!





## COMMUNITY OUTREACH COMMITTEE REPORT

**NETWORK, CAMP SUMMIT—WE HAVE LOTS GOING ON!**By *Liz Luthans*

The Community Outreach Committee swung into action after Christmas and voted to support Taylor Swallow's Eagle Scout project, refurbishing swings at Camp Summit, with a \$200.00 donation.

Susan Frensley is leading our current committee project to purchase \$400.00 of personal care items for NETWORK. Susan, Mary Beth and Ann Payne went shopping at Sam's and bought cases of sizes 3, 4, and 5 diapers, toilet paper and tampons, totaling 156 lbs. for \$300.00. Sue McElveen said NETWORK personnel were overjoyed to receive our donation. Susan is ordering 500 bars of Dial soap from an internet site with the remaining funds.

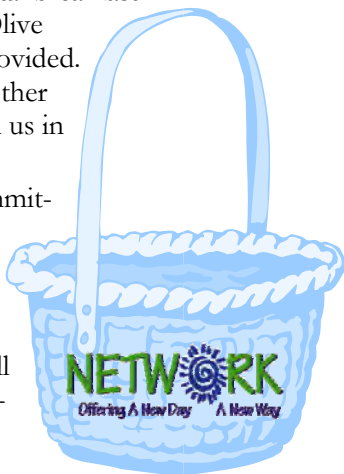


Remember to bring any hotel shampoos, conditioners, soaps, or lotions cluttering your bathroom cabinets and drop them in our NETWORK basket when you sign in at meetings.

The Community Outreach Committee is participating in Camp

Summit's Work Day on Saturday, April 2. Bobbi Klein is looking for members to volunteer a few hours on that morning, to help spruce up Camp Summit for the upcoming camping season. We thought this would be a great opportunity for the Community Outreach Committee to get together as a team and work on a hands-on project. We know this is the same day as the Richardson Library's Murder Mystery, so this will truly be a half-day commitment. We will carpool/caravan to Argyle in the morning, work, eat, and head home. Our task will probably involve cleaning the lodge. A continental breakfast and lunch from Olive Garden will be provided. We hope lots of other Altrusans will join us in this endeavor.

Our next committee meeting will be at 6:15 PM on March 17, to discuss ideas for future projects. All are welcome to attend.



**SUSAN FRENSLEY, MARY BETH MCLEMORE, AND ANN PAYNE DELIVER PERSONAL CARE ITEMS TO NETWORK.**

## Camp Summit's Annual Work Day!

On Saturday, April 2nd, families, church groups, friends and neighbors are invited to join us as we get camp ready for our campers. We will need help with many different tasks such as painting, raking, clearing brush, cleaning cabins, organizing storage units, repairs and much more! There is something for everyone.

**Who:** All Friends of Camp Summit  
**When:** Saturday, April 2nd  
**Where:** Camp Summit (campgrounds)  
 921 Copper Canyon Rd.  
 Argyle, Texas 76226  
**Time:** 8:30 a.m. - 4:00 p.m.  
 Check in begins at 8:15 a.m.  
**Why:** To get camp ready for our remarkable campers for the summer!

If you are looking for a fun outdoor activity and want to give back to the community at the same time, come participate at Camp Summit's work day!



Camp Summit  
 17210 Carrigwell Rd., Suite 180-W  
 Dallas, Texas 75252  
 972 484 8900  
[www.campsummittx.org](http://www.campsummittx.org)

## INTERNATIONAL RELATIONS COMMITTEE REPORT

**DONATION TO HEIFER FUND TO AID HAITI EARTHQUAKE VICTIMS***By Gloria Sandoval*

Altrusa Richardson, through the International Relations Committee, donates funds to Heifer International to purchase livestock to help provide families a source of food rather than short-term relief. In its 65 years of existence, Heifer International has helped millions of families in 128 countries by giving the gifts of self-reliance and hope. This year Altrusa will donate \$20.00 to Heifer International to purchase a flock of chickens. Additionally, Altrusa will donate \$200.00 to the Haiti Earthquake Relief Fund.

Altrusa will donate the funds through Heifer's **Fund a Project program**. The purpose of the program is to empower an entire community to rise out of poverty. Here is how it works:

1. **We choose** the project and help to fund the gifts of livestock, training for the community and veterinary care needed to make the project successful.
2. **Our contribution** allows Heifer to work with a community to develop farms, businesses and education required for those in need to rise from chronic poverty.
3. **We share** in the project's progress with annual project updates and the stories of the people our gift has enabled to pursue a better life.

Below is a news release regarding a three-year plan to aid families in the areas devastated by the earthquake of January 12, 2010.

**Sustainability organization developing three-year plan to aid limited-resource farmers**

LITTLE ROCK, Ark. (June 18, 2010)—In the months since the January earthquake in Haiti, Heifer International staff—in country and headquarters—have been supporting ongoing recovery efforts and planning for the long-term work to help Haitians rebuild their lives through programs to restore agricultural livelihoods using Heifer's values-based model.

Staff from Heifer Haiti's offices in Les Cayes and Cap-Haitien is working with existing project families in the north and south and families have begun receiving inputs for backyard vegetable gardens and fast-producing animals such as goats, fish and poultry. Heifer is also working with current

and past partner organizations to design community development plans to help it respond to constituency needs.

Immediately after the Jan. 12 earthquake, Heifer Haiti staff coordinated with local and international relief organizations to help deliver humanitarian aid, food and transportation to more than 2,000 injured and displaced people. Then in March 2010, a headquarters survey team traveled to Haiti to meet with country program staff to assess the needs and opportunities to rebuild and expand Heifer's program in Haiti.

Heifer staff also participated in discussions with like-minded organizations to leverage resources and increase efficiencies and to identify institutional and private funding sources to ensure long-term viability of the work and to expand it into new communities.

At the same time, Heifer donors and supporters generously provided more than \$1 million to help fund the rehabilitation work that lays ahead in Haiti. Key to success is strengthening the Haiti program, which had been working with 16,000 families, through training and organizational support, and forming an emergency team to oversee implementation of the country's long-term recovery plan.

The success of Heifer's intervention will be measured by the institutional capacity to tend to the immediate needs of families affected by the disaster while maintaining Heifer's model for sustainable community development. In March 2010 a survey team from Heifer traveled to Haiti to meet with country program staff to assess the needs and opportunities to rebuild and expand Heifer's program in Haiti.

At present, project work continues in the southern and northern parts of the country coordinated through the offices in Les Cayes and in Cap-Haitien, and Heifer is working with current and past partner organizations to design community development plans to respond to Haitian needs.



## LEADERSHIP DEVELOPMENT COMMITTEE REPORT

**WE LEAD BY WHO WE ARE***By Jane Tucker*

There is an old Quaker adage that says, "Let your life speak." Leadership in Altrusa can relate to this adage. We lead by who we are.

Harvard professor James E. Austin says that non-profit service is the invisible side of leadership because the values

based in service create far-reaching benefits beyond the satisfaction of philanthropy. As Marian Wright Edelman said, "Service is the rent we pay for being. It is the purpose of life and not something you do in your spare time."



## MEMBERSHIP RECRUITMENT COMMITTEE REPORT

## ORIENTATION/REORIENTATION TO BE HELD MARCH 26

By Sue McElveen and Norma Hammerlund

Hello Altrusa Sisters. This is to remind each of you of the upcoming Orientation/Reorientation Gathering at Nancy Rohm's beautiful home on Saturday, March 26. You may arrive anytime after 9:15 AM and enjoy a nice brunch until 10 AM, then we will be having a fun Altrusa Orientation to meet from about 10 until 11 AM. This event is for ALL Altrusans, but most especially for those who are new to our ranks. This is a great opportunity for the "newbies" to learn more about Altrusa in general and specifically what it is that we Altrusans do locally, district wide, and internationally. Even the most



seasoned Altrusa members will learn something new, and most of all, pass along your knowledge of Altrusa to our new members.

This is one of the events that will count as a missed meeting for those of you wishing to have perfect attendance, but have had to miss a meeting. Please plan to attend this fun event. There will be a sign up sheet at the March Dinner Meeting and you may email Nancy directly with your RSVP. We really need a head count so we will have enough goodies on hand for brunch.

Also, Nancy has said that any of us going to Conference will be invited to stay and work on our "dancing" partners for the District Nine Friday Fun Night.

Come one, come all for a fun morning of eating, visiting, learning, and laughter!

## PROJECT PREVIEW

## CELEBRATING INTERNATIONAL WOMEN'S DAY THROUGH BEAD FOR LIFE

By Jane Tucker

The United Nations International Women's Day (March 8) is a day when women from all continents divided by ethnic, linguistic, cultural, economic, and political differences, come together to celebrate their Day. This Day supports a campaign to promote and protect the equal rights of women and to bring empowerment to women in today's world.

This year, the International Relations committee has chosen to celebrate this day with a project that focuses on the very core of women empowering women to eradicate extreme poverty by creating bridges of understanding between impoverished Africans and concerned world citizens. Bead for Life began with a chance meeting of three women traveling through Uganda who happened to see a woman making beads by her mud hut. The women were surprised and saddened to find out that this woman, named Millie, worked for a dollar a day crushing stones in a rock quarry. They bought a few of her beads, never realizing that this would change their lives and the lives of so many Ugandans. When they returned home and found that many people admired the beads they had bought from Millie, they realized there might be a real market for the beads, creating a way of helping women like Millie.

From this simple encounter, Bead for Life began and, in September 2004, the founders of Bead for Life launched the organization to build bridges of understanding and commerce. Today, Bead for Life has created a cottage industry by hosting bead parties to provide income for close to 3,000 people of Uganda. This is a remarkable accomplishment!



**You're Invited to a BeadParty!**

*Be inspired by hardworking Ugandan women lifting themselves from poverty!*

*Purchase jewelry handmade from colorful recycled paper...and help others a world away!*

Jewelry will be sold at Altrusa MarketPlace on May 7, 2011

**Learn** how you can make a difference and have fun doing it!

**Where:** Richardson Woman's Club

**When:** March 3 & 17, 2011 at 6:15 pm

**RSVP:** No RSVP necessary - Wine will be served


BeadforLife eradicates extreme poverty by creating bridges of understanding between impoverished Africans and concerned world citizens. Ugandan women turn colorful recycled paper into beautiful beads, and people who care open their hearts, homes and communities to buy and sell the beads.

The beads become income, food, medicine, school fees -- and hope. It is a small miracle that connects and enriches everyone in the Bead Circle.

All net profits from BeadforLife are invested in community development projects that help people work their way out of poverty.

www.BeadforLife.org



## DISTRICT NINE NEWS

**CLEAN OUT YOUR CLOSET!***By Linda Olivera*

Start your Spring Cleaning in your closet for District Nine! The service project for this year's District Conference is an accessories drive for "Attitudes & Attire," a non-profit agency dedicated to serving women who are striving to succeed. These women are typically single mothers with very little personal or financial

## *A* ATTITUDES & ATTIRE™

*Promoting personal growth for women seeking self-sufficiency*

support. Many are receiving public assistance, while others are in the category of the working poor. These women are now seeking tools to raise self esteem, promote ethics, and build confidence necessary to succeed in the workplace.

Gather together your gently used, sharp, stylish jewelry, handbags, and scarves, along with new pantyhose (any size or skin tone) and take/send them to Conference!

## MEMBERSHIP RETENTION PROJECT REPORT

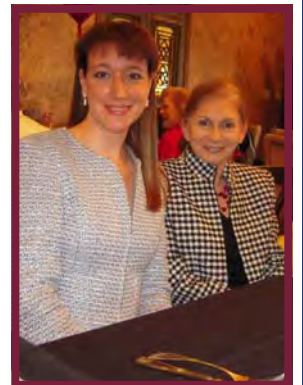
**LUNCH BUNCH AND CHOCOLATE ANGEL—WHAT A TREAT!***By Ann Eisemann*

Our February Lunch Bunch celebrated Valentine's Day at the Chocolate Angel. Seventeen Altrusans and friends were able to attend and enjoy some time together over lunch.

The Chocolate Angel pushed some tables together and welcomed President Mary Beth McLemore, Kim Kierce and her guest Jackie, Carolyn Swanson, Kay

George, Genevieve Hamulak, Elizabeth Smith, Jean Stuart, Ann Payne, Ann Eisemann, Bobbi Klein, former member Janet DeVault and her mom Jeannie, Andrea Rutledge, and Gerry Carron and her sis Jackie, and Ellen Stevenson, who came with cracked ribs and all.

Our next Lunch Bunch gathering will be in May.





## ABILITY HOUSE PROJECT REPORT

**ALTRUSANS CELEBRATE VERA'S BIRTHDAY***By Bill Knudsen, President/CEO, Ability Connection Texas*

Hello Altrusa of Richardson!

Vera had a very wonderful Birthday thanks to all her Altrusa friends! She enjoyed her two birthday cakes, ice cream and soft drinks – and she eagerly opened her card and then her beautiful pants and blouse set!

Janie Jaquier, Gina Coffey, Carla Weiland, Anne Eisemann, Jan Skinner, Sandy Martin, Bobbie Klein and Kim Kierce all serenaded Vera with a rousing version of Happy Birthday! Special party guests included Jessica Hart, Betty Hart, Vera's sister and her great niece! We hope this photo helps remind you of the special friendship the Ability House residents have for their Altrusa friends!

I also wanted to share that on February 9<sup>th</sup> we changed our name from United Cerebral Palsy (UCP) to **Ability Connection Texas** (ACT)! Our mission remains the same...as well as our passion to serve people with disabilities throughout Texas! While our new name may be a surprise, the change is an acknowledgment of the increasing challenges we have had marketing the name United Cerebral Palsy – and the reality that the nationwide UCP network is experiencing challenges. We have tried to market the UCP name by sharing that eight out of every ten people we help have disabilities other than Cerebral Palsy. But increasingly the public thinks we serve only people with CP, and most people we meet with do not know what UCP stands for. While we greatly appreciate our time as a UCP affiliate...we look forward to the opportunity to serve more people with disabilities throughout Texas as **Ability Connection Texas**.

We look forward to continuing to collaborate with you - and Altrusa of Richardson - as we work together to meet the needs of people with disabilities in our community – and we send our very best wishes for a 2011 filled with continued success and happiness!

*Bill*

President/CEO, Ability Connection Texas

Website: [www.abilityconnectiontexas](http://www.abilityconnectiontexas)



## SPECIAL PROJECT REPORT

**TAMALES—ON THE GO!***By Jo Leeper*

On Thursday, February 24, Kay George, Gerry Caron, and Jo Leeper, with map in hand, drove to The Stewpot in downtown Dallas to deliver six dozen frozen tamales. These were not just any tamales—they came from Neiman Marcus Epicurean Shop. Now, you might ask, "How did you come by six dozen tamales from Neiman's?" Jo's very generous next-door neighbor gave them to her for Christmas and we could not think of a better thing to do with that amount of food than to help feed the hungry. The Director of Volunteers at The Stewpot was delighted to have this donation and gave us directions

on where to deliver it. So, downtown we went—and then, of course, we stopped for lunch on the way back.

This is another example of Altrusans performing good works for the community, and having a great time, too!



### CONFERENCE DELEGATES

Delegates and Alternate Delegates to the 2011 District Nine Conference were elected at the February 17 meeting.

Delegates are:

Bonnie Perry  
Barbara Cornelius  
Dena Davis  
Kimberly Kierce

Alternates are:

Mary Beth McLemore  
Jenn Rohm  
Elizabeth Smith  
Pam Fitzgerald



**NANCY ROHM COORDINATED FELLOW ALTRUSANS IN JUDGING THE SCIENCE FAIR AT CANYON CREEK ELEMENTARY SCHOOL IN EARLY FEBRUARY.**

## SECRETARY-GENERAL'S MESSAGE ON INTERNATIONAL WOMEN'S DAY 2011

One hundred years ago, when the world first commemorated International Women's Day, gender equality and women's empowerment were largely radical ideas. On this centenary, we celebrate the significant progress that has been achieved through determined advocacy, practical action and enlightened policy making. Yet, in too many countries and societies, women remain second-class citizens.

Although the gender gap in education is closing, there are wide differences within and across countries, and far too many girls are still denied schooling, leave prematurely or complete school with few skills and fewer opportunities. Women and girls also continue to endure unacceptable discrimination and violence, often at the hand of intimate partners or relatives. In the home and at school, in the workplace and in the community, being female too often means being vulnerable. And in many conflict zones, sexual violence is deliberately and systematically used to intimidate women and whole communities.

My UNiTE to End Violence Against Women campaign, along with its Network of Men Leaders, is working to end impunity and change mindsets. There is also growing international resolve to punish and prevent sexual aggression in conflict, and to do more to implement the Security Council's landmark resolution 1325 on women, peace and security, which highlights the importance of involving women in all aspects of building and keeping peace.

Another area where we urgently need to see significant progress is on women's and children's health. The September 2010 Summit on the Millennium Development Goals recognized the central importance of this issue, and Member States and the philan-

thropic community have pledged strong support for my global strategy to save lives and improve the health of women and children over the next four years.

In the realm of decision-making, more women, in more countries, are taking their rightful seat in parliament. Yet fewer than 10 per cent of countries have female heads of state or government. Even where women are prominent in politics, they are often severely under-represented in other areas of decision-making, including at the highest levels of business and industry. A recent UN initiative – the Women's Empowerment Principles, now embraced by more than 130 major corporations – aims to redress this imbalance.

This year's observance of International Women's Day focuses on equal access to education, training and science and technology. Cell phones and the Internet, for example, can enable women to improve the health and well-being of their families, take advantage of income-earning opportunities, and protect themselves from exploitation and vulnerability. Access to such tools, backed up by education and training, can help women to break the cycle of poverty, combat injustice and exercise their rights.

The launch this year of the United Nations Entity for Gender Equality and the Empowerment of Women – UN Women – demonstrates our intent to deepen our pursuit of this agenda. Only through women's full and equal participation in all areas of public and private life can we hope to achieve the sustainable, peaceful and just society promised in the United Nations Charter.

Ban Ki-moon



The Spring Appletree Auction will be held at 6:30 PM on April 19. The facility is located at 870 West Arapaho Road in Richardson. Come help or just watch the fun!

### BOARD ACTIONS

- Signed contract with Hyatt Regency Hotel for OWT Luncheon Oct 28, with notation that details are TBD.
- Discussed Wild Apricot web tools for on-line OWT registration and payment, eventually for Club processes; Bonnie Perry will ask 2011-2012 Finance Committee to review funding.



## MEMBER HIGHLIGHTS

## CHEERS FOR ALTRUSANS!

Let's all give a big cheer for:

- Norma, Sue, and Recruitment Committee for a wonderful Birthday Party
- Norma Hammerlund for the beautiful, yummy cake
- LaVone Arthur for the inspiring talk. Now, no one who was there can say, "I'm too busy to lead."
- Elisa Belsley for jumping in and going to many Altrusa events. That's the way to get to know Altrusa.
- Jenn Rohm for helping out Mary Beth with her report and the voting
- Nancy Rohm for keeping our President sane, inspired, and on task
- Janice Swallow for reading the 2011 OWT contract. She has dealt with lots of OWT contracts.
- Linda Olivera for always promptly editing club correspondence letters



- Pam Kovacs for providing a wonderful venue (Friends Place) for so many of our events!
- Barbara Cornelius for so accurately recording the minutes of our meetings
- Andrea Rutledge, Barbara Cornelius, and Mary Beth McLemore for submitting photos for this issue of the newsletter
- Kay George for leading the Book Club; she sends the reminders, writes articles for the newsletter, and somehow finds time to read the books!

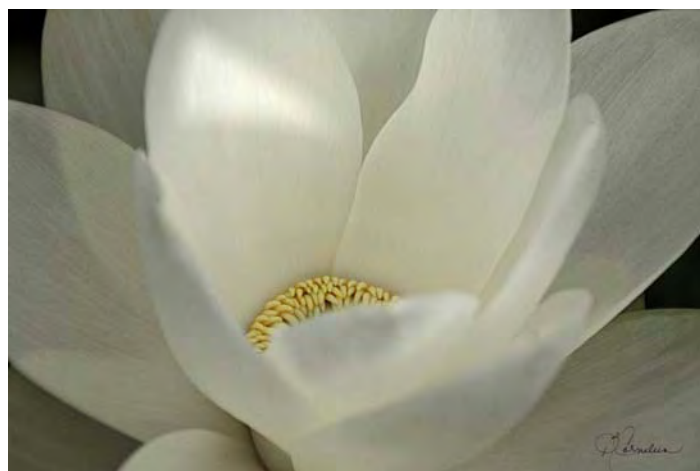
### NEWS FROM OTHER ALTRUSA CLUBS FORT WORTH FUNDRAISER



## MEMBER HIGHLIGHTS

## 1ST PLACE GOES TO BARBARA!

Congratulations to our own Barbara Cornelius for winning FIRST PLACE the Flora Division of the recent City of Richardson Photography contest. Her entry, a color photograph of a lotus water lily, (shown below) is on display at Canyon Creek Art and Frame, 2051 North Central Expressway in Richardson.



THIS WAS THE GROUP OF RICHARDSON ALTRUSANS WHO ENJOYED MEETING AND GREETING AT THE DOUBLETREE HOTEL IN FEBRUARY. JOIN THEM ON THE SECOND THURSDAY OF EACH MONTH!



**PICTURED ABOVE ARE 13 OF THE 14 BRAVE ALTRUSANS WHO ATTENDED THE FEBRUARY 3 BUSINESS MEETING, IN SPITE OF THE COLD WEATHER AND SLIPPERY STREETS. NOT SHOWN IS PRESIDENT AND PHOTOGRAPHER MARY BETH MCLEMORE.**

## ALTRUSA ACCENT

### CLUB ACTIVITY REPORT

Each Altrusa Club prepares and submits an annual Club Activity Report to its District by June 1<sup>st</sup>. Club Activity Reports are used to plan and evaluate progress at the local, District and International levels. The Club Activity Report is also an opportunity for Clubs to assess and report the year's achievements and make recommendations on a variety of other topics. (from the Altrusa Encyclopedia 2009)

The Club Activity Report facilitates planning and provides awards information. Our information is added

to the other clubs in District Nine and compiled by a District Nine Board Member, then sent to Altrusa International to give a profile report on our District's progress towards achieving the objectives of the District and International Long Range/Strategic Plan. In the past, this report was used by International to determine if a club met the criteria for a Distinguished Club Award. There is now a separate Distinguished Club Award Application that is submitted to International by June 1.

### ACE AWARD CRITERIA AND YEAR-END COMMITTEE REPORTS

Year-End Committee Reports are due to Mary Beth McLemore by 5 PM, April 25, 2011. These reports are VERY important. It is the responsibility of each committee chair to make sure the report is submitted. The information from these reports will be used to complete the *Club Activity Report* required by Altrusa District Nine the Distinguished Club Award Application submitted to International.

In addition, your Year-End Committee Reports are judged for our club's annual ACE (Altrusa Community Effectiveness) Award, which honors two committees each year—one Foundation and one Administration. Committee reports are judged, based on the ACE criteria shown below, by someone who is not a member of our club. Please submit your reports NO LATER THAN APRIL 25 at 5:00 PM. This will give Mary Beth time to finish her reports, and our judge time to review the reports and present the awards at the May installation.

Those eligible for application for the ACE Award will

include a group of Altrusans within the club that have completed a project, task, or service that meets the criteria listed below. The group may be a service subcommittee, a project committee, or a committee such as Membership, Communication, or Finance. The following criteria will be used to judge the ACE Award:

- ☐ Enrichment to those served (club, local, national, or global).....20 points
- ☐ Impact on Altrusa International, Inc. of Richardson .....15 points
- ☐ Innovative/Creative.....10 points
- ☐ Quality of the Report
  - Clarity/readability.....5 points
  - Relevant supporting materials.....5 points
- ☐ Time devoted.....5 points

The length of the ACE Award entry may not exceed two typed pages with supplemental material limited to three additional pages.



## MEETING HIGHLIGHTS

**FEBRUARY 17 MEETING**

LaVone Arthur, Governor-Elect of District Nine, was our guest speaker and official District Visitor at our February 17 dinner meeting.

We celebrated the 45th birthday of the Club with a special cake baked by Norma Hammerlund. The Membership Recruitment Committee was in charge of arrangements for the meeting.



## MEETING PREVIEW

**JOHN SWEEDEN TO SPEAK AT MARCH 17 DINNER MEETING**

*By Janice Swallow*

John F. Sweeden is a co-founder of Five Star Advisor Partners, L.L.C.. He started his career in financial services with H.D. Vest in April of 1987. John holds numerous professional licenses in multiple states. Among them are the FINRA Series 7, 63, 4, 24, 53 and 65. He holds a Texas Life, Accident, Health, HMO and Property & Casualty License. Prior to starting his private practice as a Financial Advisor in 1998, John was a member of the Executive Management Team at HD Vest where he was responsible for Competitive Intelligence, Operations Analysis and Quality Assurance.

John's area of focus is working with individuals and businesses to meet their financial goals through a variety of tools including managed accounts, mutual funds, life insurance, home, auto and



business insurance and home mortgages. John's background includes experience in business valuation and mergers & acquisitions, which he utilizes in support of his client base.

John holds a Bachelor of Music Performance degree and a Master of Business Administration degree from Baylor University in Waco, Texas. John and his family are members of the First Baptist Church of Richardson, Texas.

John served 14 years as a elected official on the Richardson City Council in Richardson. He plays saxophone with the Dallas Wind Symphony and the Texas Saxophone Quartet. John is married to Kellie and they have three children, Hannah, Robin and Olivia.

## INTERNATIONAL FOUNDATION NEWS

## LAMPLIGHTERS

Lamplighters are Altrusans who have contributed \$500 or more to the International Foundation in a 12-month period. Contributions can be made in one's own name or on behalf of someone else. Lamplighters receive a special Lamplighter Pin/Pendant. With each additional donation of \$500 in succeeding years, a diamond chip is added to the Lamplighter Pin/Pendant.

Lamplighters are recognized in Altrusa publications, in the Foundation's Annual Report, and at the Foundation Luncheon held at each Altrusa International Convention. When our own "Mary O" was District Nine Governor, the club made a contribution in her name, making her a Lamplighter.



## INTERNATIONAL NEWS

## CHRISTCHURCH, NEW ZEALAND EARTHQUAKE

*Via email from Leanne Milligan, Governor, District Fifteen, February 28, 2011*

I thought it about time I sent out another update. Fortunately we have accounted for Christchurch Altrusa members but we are now hearing of members around the country that have been affected by the loss of family members and friends. Our heartfelt sympathy goes out to all those who have lost loved ones. The official death toll stands at 148 but there are over 50 people still unaccounted for so we are all stealing ourselves for the death toll to grow. The job of body identification is a frustratingly slow one and we feel for the families who are waiting to find out the fate of their loved ones. While the search and rescue phase continues there have been no survivors found since Wednesday last week.

Damage estimates are growing. It is estimated that 1/3 of the Central Business District will need to be demolished. There are a large number of roads that are still impassable and bridges that are closed. The threat of rock falls created by aftershocks is resulting in further evacuations in some residential areas. The local council is still working to restore electricity, water and power to the worst effected areas. It has been amazing to see how people in Christchurch have pulled together to help each other. Volunteers from around the region and further afield have come to work alongside the locals on the clean up. It will be a long slow process.

Many schools are still closed due to damage and businesses operating inside the CBD cordon are either having to close for a

period of time or relocate to the outskirts of the city. This is having an effect on many families. While the after shocks have slowed down they are still very stressful for those who experienced the "big one".

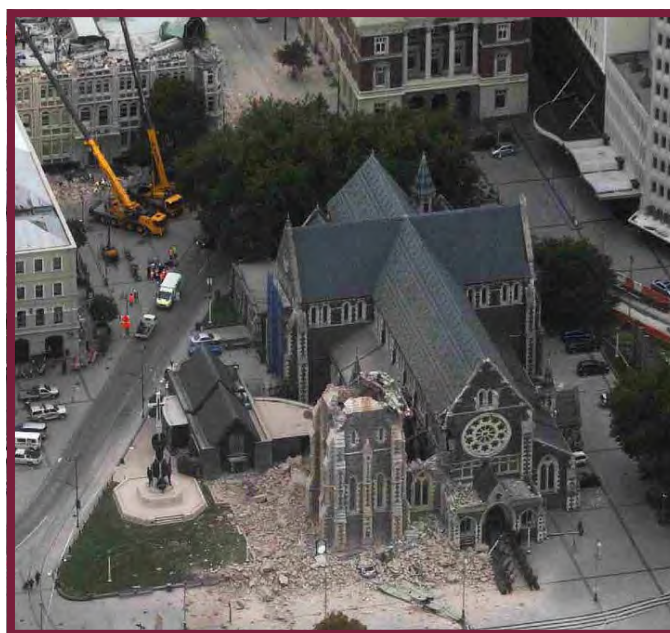
Around the country fundraisers are being held to help the victims of the quake. We have been overwhelmed by the support from overseas but the damage is so extensive the city of Christchurch and its citizens will need all the help that they can get.

Our Prime Minister John Key said "Your humanity is more powerful than any act of Mother Nature". It will be the people of Christchurch and New Zealand, supported by our many friends from overseas that will work to turn this disaster into a new beginning for the community.

Thank you so much for all of your kind thoughts, your prayers an support over the past week. Your are all "Leaders in Service" and we appreciate your support.

Leanne Milligan

Governor, District Fifteen, Te Awamutu





Altrusa International, Inc. of Richardson, Texas

### Altrusa Business Meeting

February 3, 2011

**President Mary Beth McLemore called the meeting to order at 7:01 pm**

**Agenda:** The February 3, 2011 agenda was adopted as amended

**Invocation and Pledge:** Kimberly Kierce, "Encouragement" by St Francis of Assisi

**Accent:** Jean Stuart "Delegates to Conference"

**Minutes:** Minutes of December Meetings were approved as amended

**Correspondence:** Kimberly Kierce

- *World Ark* magazine
- RALC letter advising of the retirement of RALC Executive Director, Mimi Tanner
- Two applications for Mary Latimer Medical Scholarship and accompanying letters of recommendations (forwarded to Susan Frensey and Scholarship Committee)

#### Unfinished Business:

- Nomination Committee: Kay George

Presentation of the nominations for the 2011-2012 Board of Directors:

President	Bonnie Perry
President-Elect	Kimberly Kierce
Vice President	Janet Vance
Foundation Treasurer	Liz Luthans
Administrative Treasurer	Dena Davis
Recording Secretary	Toni Garrett
Corresponding Secretary	Sue McElveen
Directors	Ann Payne and Genevieve Hamulak
Returning Directors	Pam Kovacs and Nancy Rohm

#### New Business:

- Election of Delegates to District Nine Conference - Mary Beth McLemore  
Postponed until February 16, 2011 Dinner Meeting due to weather.
- International Relations Committee - Kimberly Kierce  
In honor of International Day of Women (March 8, 2011), the Committee is participating in the Beads for Life Project by hosting jewelry making parties on March 3 and 17 at 6:15 pm prior to the club meetings. For more information, see Jane Tucker. The jewelry will be sold at the Altrusa Marketplace being hosted by the Membership Retention Committee, on May 7, 2011.
- Leadership Committee - Mary Osentowski  
Leadership Workshop is scheduled for March 5, 2011 at 9:30 am at Richland College. The speaker will be Elaine Sullivan. Members are encouraged to advertise attending this free event, especially with other Altrusa clubs. Event flyers are available. RSVP deadline: March 2, 2011

#### Announcements:

- Meet & Greet - Thurs. Feb. 10, 5:30 pm at Doubletree Hotel
- Treasurer Swap - Sat. Feb. 12, 10:00 am to 12:00 pm at Friend's Place
- Lunch Bunch - Mon, Feb 14 - Chocolate Angel (RSVP to Anne Eisemann)
- Bridge - Mon. Feb. 14, 6:30 pm at Julianne Lovelace's house
- Dinner Meeting - Feb. 17 "Happy Birthday Altrusa Richardson - 45<sup>th</sup> years. Speaker will be LaVone Arthur, District Nine Governor Elect
- Book Club - Mon. Feb 28, 6:00 pm at Friends Place

#### TLC:

Suzanne Cotton, son Jason, and granddaughter Natalie  
 Jane Tucker's husband - Don Tucker  
 Barbara Cornelius's daughter - Shari Strilecky  
 Mimi Tanner  
 Mimi Tanner's sister - Betsy Trygar

**Attendance:** 14 members

**The meeting was adjourned at 7:35 pm.**

The next Business Meeting will be held on Thursday, March 3, 2011 at 7:00 pm

Respectfully submitted

Kimberly Kierce, Corresponding Secretary

**Altrusa International, Inc of Richardson**  
 Program Meeting Minutes  
 February 17, 2011

**Call to Order** - President Mary Beth McLemore called the meeting to order at 7:00pm

**Adoption of the Agenda** - **Adopted as amended**

**Invocation and Pledge:** Kay George

**Introduction of Guests:** Betty Crombie – mother of Barbara Cornelius  
 Nancy Crowe – guest of Jan Skinner  
 Gay McAlister – guest of Cindy McIntyre  
 Betty Horde – guest of Ginna Coffey

**Accent:** Sue McElveen – “Service” and “Conference”

**Election of Delegates** for District Nine Conference

**Program:** LaVone Arthur, Governor Elect 2011/2012 Introduction by Sue McElveen

**Announcements:**

- Shopping for Network & adding to this with household articles for NETWORK
- Delegates/ Alternates for District Nine Conference
  - Delegates: Bonnie Perry  
Barbara Cornelius  
Dena Davis  
Kimberly Kierce
  - o Alternates: Mary Beth McLemore  
Jenn Rohm  
Elizabeth Smith  
Pam Fitzgerald
- Dallas Altrusa Club – Celebrate Women on March 24, 11:30 to 1:30 at Museum of Biblical Arts
- Vera’s Birthday – Saturday Feb. 19, 1:30 at Ability House
- World Day of Social Justice – Sunday Feb. 20
- Tidings Deadline- Monday Feb. 21
- Book Club – Monday Feb. 28, 6:00 at Friends Place
- Next Board Meeting – Thursday, Feb. 24 at Mary Beth’s Richardson house, social time 6:30 & meeting 7:00 (Drinks and snacks provided.)
- Bridge – Monday, March 14, 6:30 pm at Janie Jaquer’s house
- OWT Reception – Thursday, March 3, 6:00pm
- Leadership Committee presents “Living and Leading From Where We Are” – March 5, 9:30a.m.-12:00p.m. at Richland College

**TLC:**

- |  |   |
|--|---|
| • Elizabeth Smith                                      | • Mimi Tanner                           |
| • Sandi McCracken                                      | • Ellen Stevenson                       |
| • Suzanne Cotton, son Jason, and granddaughter Natalie | • Debbie Payne – friend of Ginna Coffey |
| • Don Tucker – Jane Tucker’s husband                   | • Brenda Boston                         |
| • Betsy Trygar – Mimi Tanner’s sister                  |   |

**Birthday Drawing**

**Benediction/Adjournment:**

**Greeters:** Pam Kovacs & Sue McElveen

**Attendees:** 45 members, 5 guests

The next program Meeting will be at 7:00pm, Thursday, March 17, 2010 at The Woman’s Club.

After Brags, Fines and Benediction, the meeting was adjourned at 9:00pm

Respectfully submitted: Barbara Cornelius, Recording Secretary



## CLUB CALENDAR

### MARCH 2011

SU	MO	TU	WE	TH	FR	SA
		1	2	3	4	5
6	7	8	9	10	11	12
13	14	15	16	17	18	19
20	21	22	23	24	25	26
27	28	29	30	31		

Tues. evenings (5:45 PM) Read to Me, Terrace Library

Thurs., Mar 3 (6:00 PM) OWT Reception (Clubhouse)

Thurs., Mar 3 (6:15 PM) Beads for Life (Clubhouse)

Thurs., Mar 3 (7:00 PM) Business Meeting (Clubhouse)

Sat., Mar 5 (9:30 AM-Noon) Leadership Workshop at Richland College

Wed., Mar 9 (6:00 PM) Atria Bingo

Thurs., Mar 10 (5:30 PM) Meet and Greet at Doubletree

Mon., Mar 14 (Noon) Reservations due for Mar 17 meeting

Mon., Mar 14 (6:30 PM) Bridge

Thurs., Mar 17 (6:15 PM) Beads for Life (Founders Hall)

Thurs., Mar 17 (7:00 PM) Dinner Meeting (Founders Hall)

Mon., Mar 21 Tidings Deadline

Thurs., Mar 24 (7:00 PM) Board Meeting (6:30 social time)

Sat., Mar 26 (9:00 AM) Orientation/Re-Orientation

Mon., Mar 28 (6:00 PM) Book Club meeting

### MARCH BIRTHDAYS

2<sup>nd</sup> Sarah Nesbit  
 11<sup>th</sup> Ingrid Palet  
 18<sup>th</sup> Deborah Gamble  
 19<sup>th</sup> Jane Kovacs  
 25<sup>th</sup> Cinda Brown  
 27<sup>th</sup> Ann Payne  
 28<sup>th</sup> Elisa Belsley, Carla Weiland



Remember, if you choose, you may bring a gift to the dinner meeting in the month of your birthday. There will be an opportunity to put our names in a drawing (only \$1 per chance!) to win a birthday gifts. The guideline is that the gift should cost around \$5.



### MEMBERSHIP RECRUITMENT

#### ORIENTATION/RE-ORIENTATION



Saturday, March 26

9:00 to 11:30 AM

Nancy Rohm's home

Counts as a make-up meeting!

For new members and everyone else!

Brunch will be served.

### MONTHLY MEET AND GREET



March 10, 5:30 PM to 7:00-ish  
at the Richardson Doubletree Hotel

Happy hour drink specials and 1/2-price appetizers!  
Is your birthday in March? Come celebrate!

If you have someone interested in Altrusa, this is a fun, easy way for her to get to know some of us!

### MEETINGS

#### Business Meeting

7 PM, March 3

Clubhouse at  
Richardson Woman's Club

Dinner Reservations  
due by Noon, Monday,  
March 14

Contact: Jean Stuart

#### Dinner/Program Meeting

7 PM, March 17

Founders' Hall at  
Richardson Woman's Club

#### Board Meeting

7 PM Thursday,  
March 24

(social time at 6:30 PM)

### MEMBERSHIP RETENTION

#### BRIDGE



Monday, March 14

6:30 PM Schmoozing

7:00 PM Let's play bridge

At Janie Jaquier's home

### MEMBERSHIP RETENTION BOOK CLUB



The Book Club will meet  
6:00-7:30 PM on March 28.  
Please join us for a review of  
**Pride and Prejudice** by  
Jane Austen. As always, we  
meet at Friends Place Adult  
Day Services, 1960 Nan-  
tucket Drive in Richardson.

Refreshments will be served.